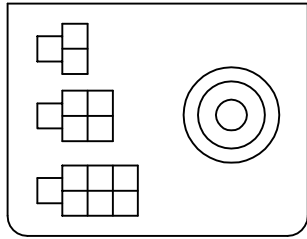


REVISIONS

LTR	DESCRIPTION	DATE	APPROVED
	INITIAL RELEASE	12/3/96	



CONNECTOR ORIENTATION

RECTIFIER
P.N. 04-709

P.N. 19-032
4 PLACES

P.N. 19-006
BOLT TO CASE USING
BOLT FOR RECTIFIER
COVER LUG WITH BLACK SHRINK

7-PIN CONN.
P.N. 21-500
COSWORTH PP1821
USE P.N. 21-503 PIN

5-PIN CONN.
P.N. 21-501
COSWORTH PP0638
USE P.N. 21-503 PIN

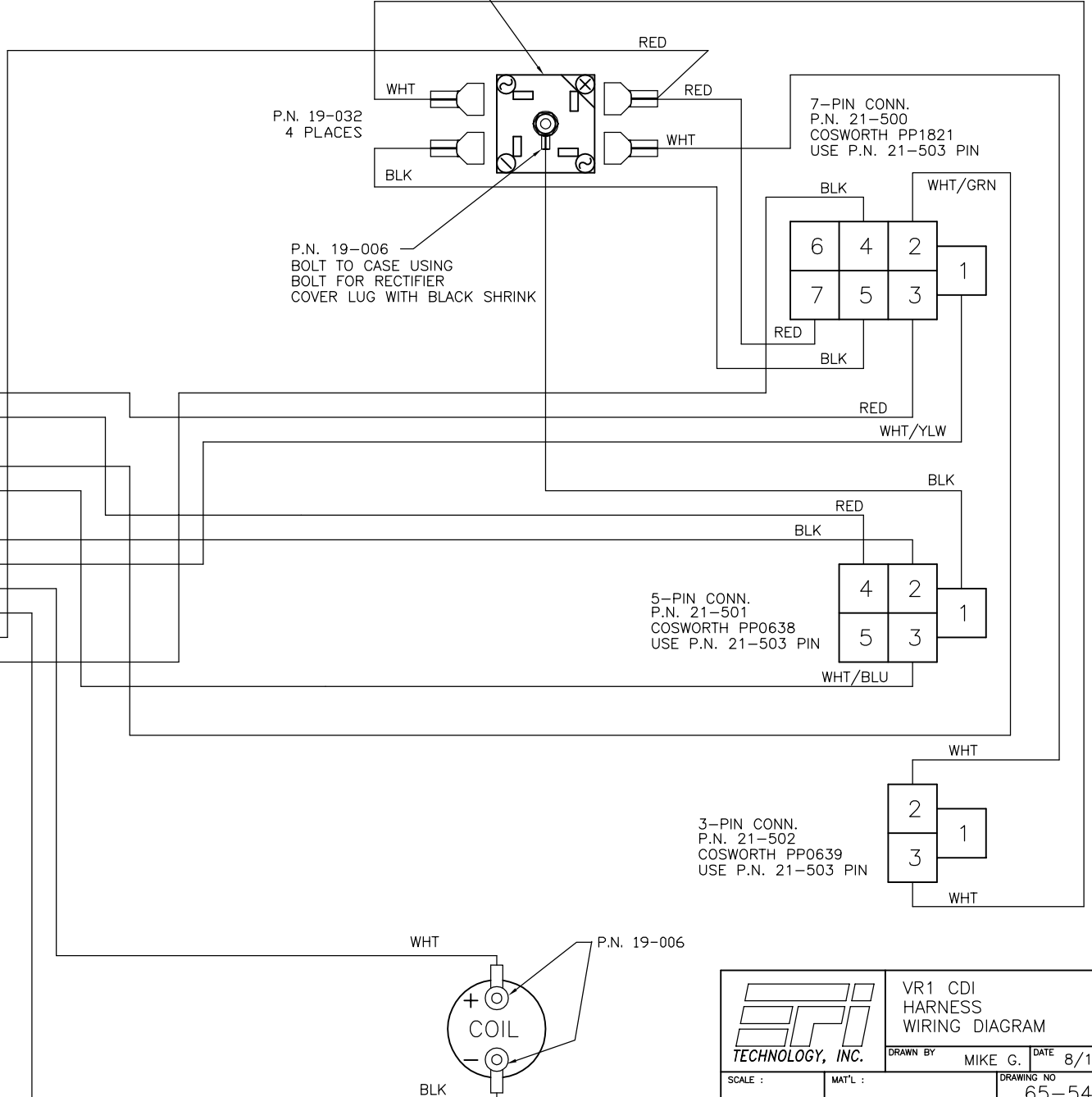
3-PIN CONN.
P.N. 21-502
COSWORTH PP0639
USE P.N. 21-503 PIN

A	12v SW.	18awg
B	VCC 5v	18awg
C	LIMIT	18awg
D	RETARD	18awg
E	HALL	18awg
F	GND	18awg
G	MAG	18awg
H	TACH	18awg
J	COIL +	18awg
K	COIL -	18awg
L	VBATT	18awg
M	GND	18awg

SUPERSTOCK
MS 3476 14-12S
P.N. 20-709

NOTES:

- 1) PLASTIC PANEL MOUNT CONNECTORS 21-500, 21-501 21-502, ARE SHOWN FROM BACK VIEW.
- 2) LABELS ARE YELLOW WITH CLEAR OVER.
- 3) COVER COIL POS LUG WITH RED SHRINK.
- 4) COVER COIL NEGATIVE LUG WITH BLACK SHRINK.
- 5) USE 21-503 SPADE CONNECTOR FOR CONNECTORS 21-500, 21-501, 21-502.
- 6) IF YOU DON'T KNOW ASK.



	VR1 CDI HARNESS WIRING DIAGRAM	
	DRAWN BY MIKE G.	DATE 8/11/98
SCALE :	MAT'L :	DRAWING NO 65-543W
DO NOT SCALE DRAWING		SHEET NO : 1 OF 1